

Office premises of Helsinki Central Station

# /LÄNSISIIPPI

---

Introduction



---

Location



---

Facilities



---

Contact information

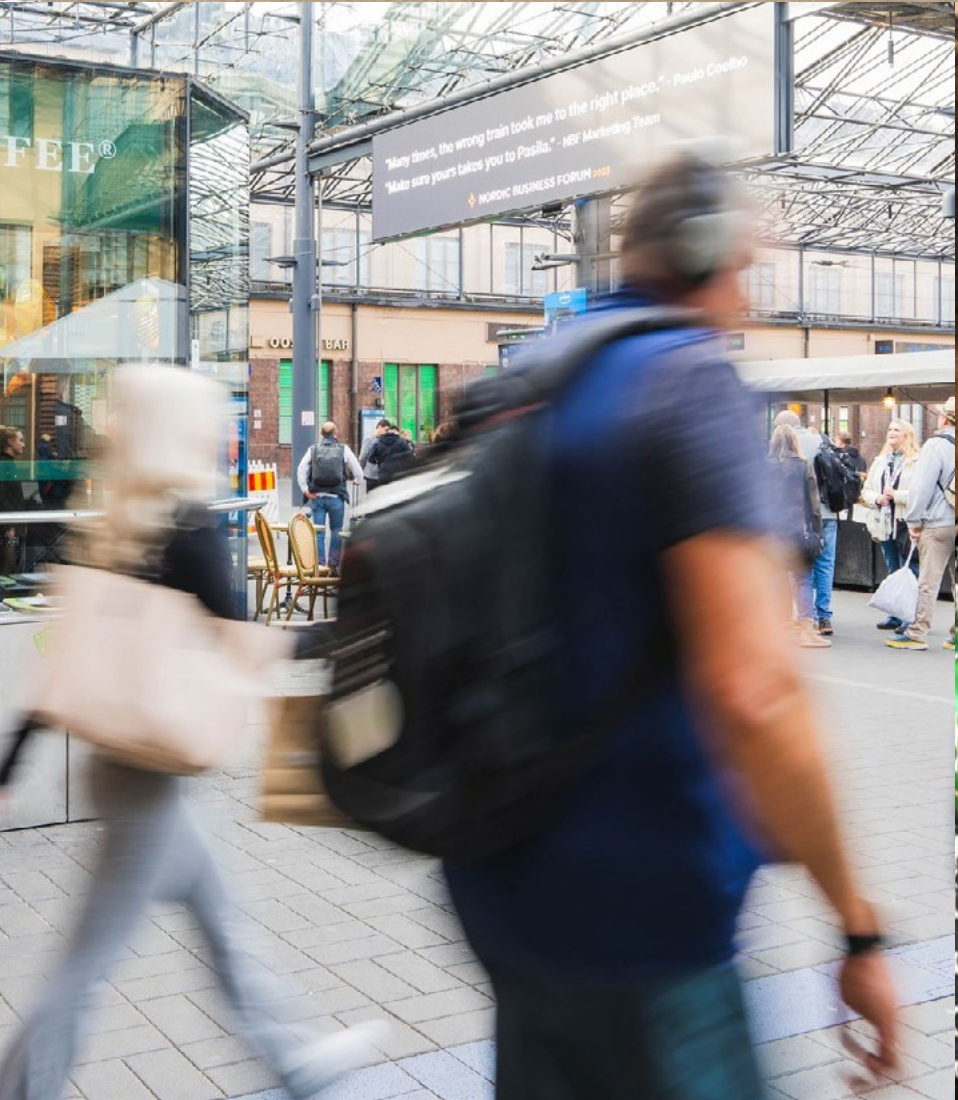
---





A PLACE OF  
GROWTH IN THE  
CORE OF THE CITY





The renewed and still developing Central Railway Station is just as current as when it was completed 105 years ago. The magnificent national landmark designed by Eliel Saarinen lives in time and at the heart of everything. Since 2018, significant investments have been made in the renovation of the main train station and the property perfectly meets today's technical, functional and aesthetic requirements.

Now you have a wonderful opportunity to move your office to this building in the heart of our capital, when newly renovated premises of the station's west wing are available.



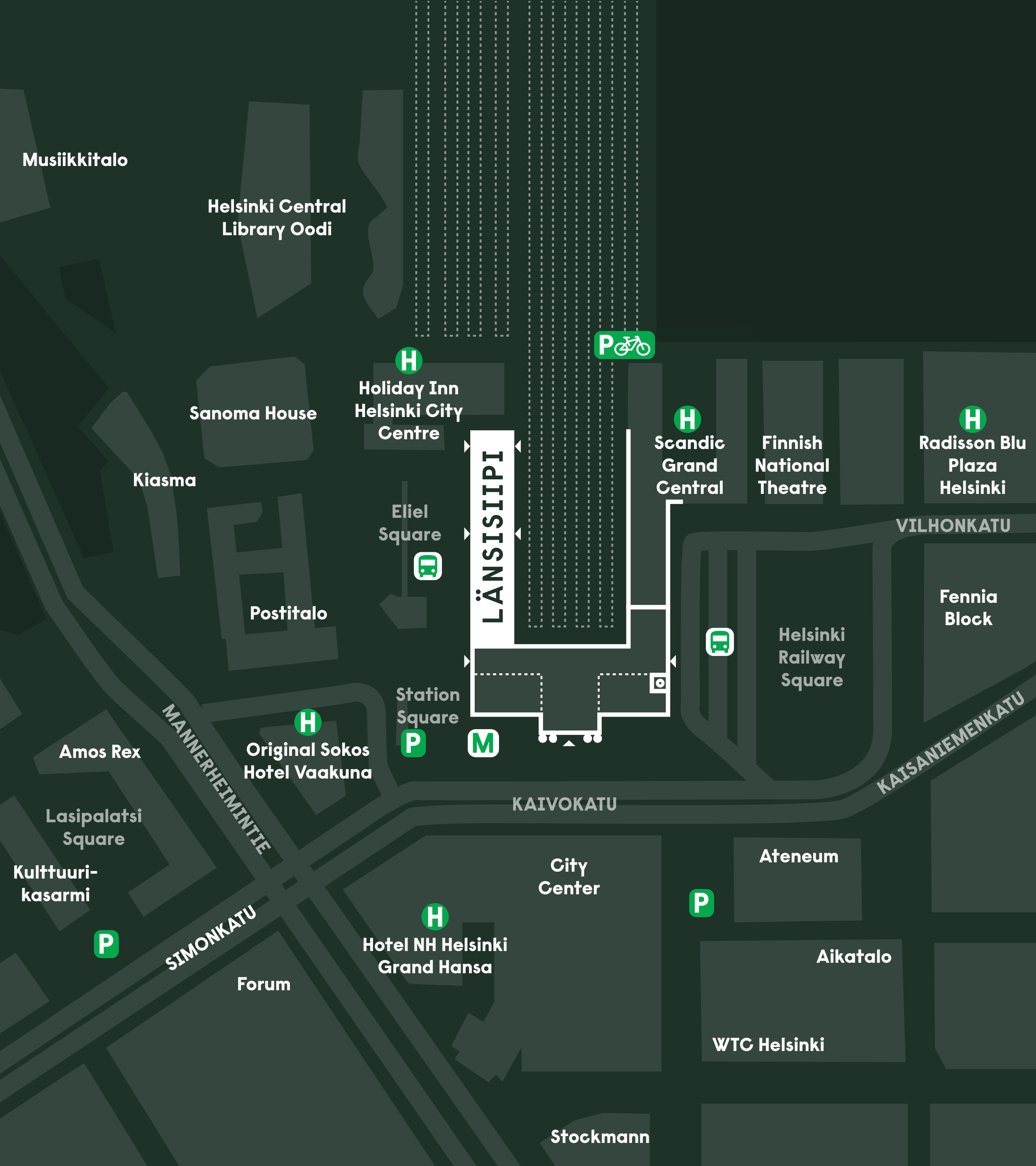
THERE'S NO BETTER  
LOCATION





The entrance to the Länsisiipi premises is directly from Eliel Square. Next to this traffic hub is everything you could wish for. The service offering at the station is excellent, including 15 restaurants and cafes, three kiosks, a pharmacy, a flower shop and Forex. Right nearby you will find the country's most comprehensive range of services, including City Center's restaurants and shops, shopping centers, department stores and hotels.





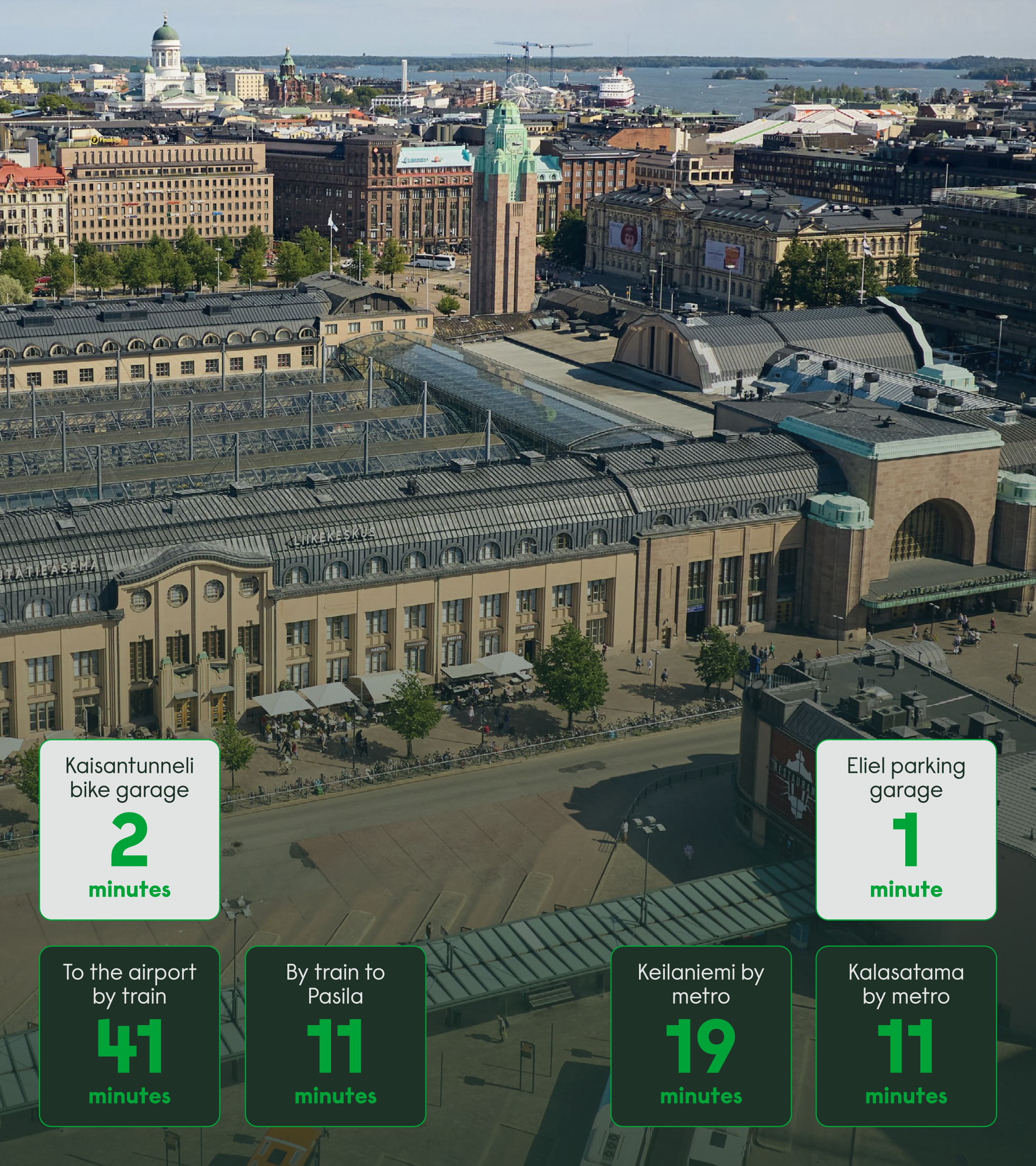
### Comprehensive services under one roof

- o More than 15 restaurants and cafes
- o 3 kiosks
- o Pharmacy, flower shop and Forex
- o An event space to be completed at the station for organizing business events

### Excellent service offering all around within walking distance

- o Citycenter's restaurants and shops
- o Department stores and shopping centers
- o Hotels
- o The country's most comprehensive cultural venues and services





Kaisantunneli  
bike garage

**2**

minutes

To the airport  
by train

**41**

minutes

By train to  
Pasila

**11**

minutes

Eliel parking  
garage

**1**

minute

Keilaniemi by  
metro

**19**

minutes

Kalasadama  
by metro

**11**

minutes

The central location of the railway station means the best accessibility of the city and the entire country. The station is a hub for all public transport modes, so Keilaniemi, Kalasadama and Pasila are within easy rail connection. Connections to the airport, ports and all over the capital region and the whole country are smooth and guaranteed. From Eliel parking garage, there is a direct passageway from the inside to the station, and you can take a bicycle inside the parking garage. Naturally, cycling and walking is a smooth and easy solution when everything is close by.



SUITABLE JUST  
FOR YOU





The premises can be used for spectacular exhibition venue, for office use and almost everything in between.





The high room height and large windows of the offices give room for thoughts and growth. The open floor plan and adaptability mean that you can customize the spaces to suit your activities.





Possibility to have your own entrance from Eliel Square straight up.

Facilities/LANSISIPI



# 2<sup>nd</sup> floor / example base

Area of the whole farm: **1575 m<sup>2</sup>**. It is possible to share the space with three different operators.

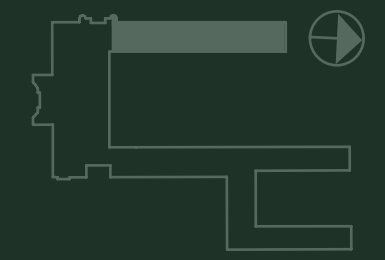


The room height on the 2<sup>nd</sup> floor is 4,6 meters



- Office
- Negotiation space
- Break area
- Copy room
- Bathroom, staff facilities
- Aisle
- Storage
- Technical space

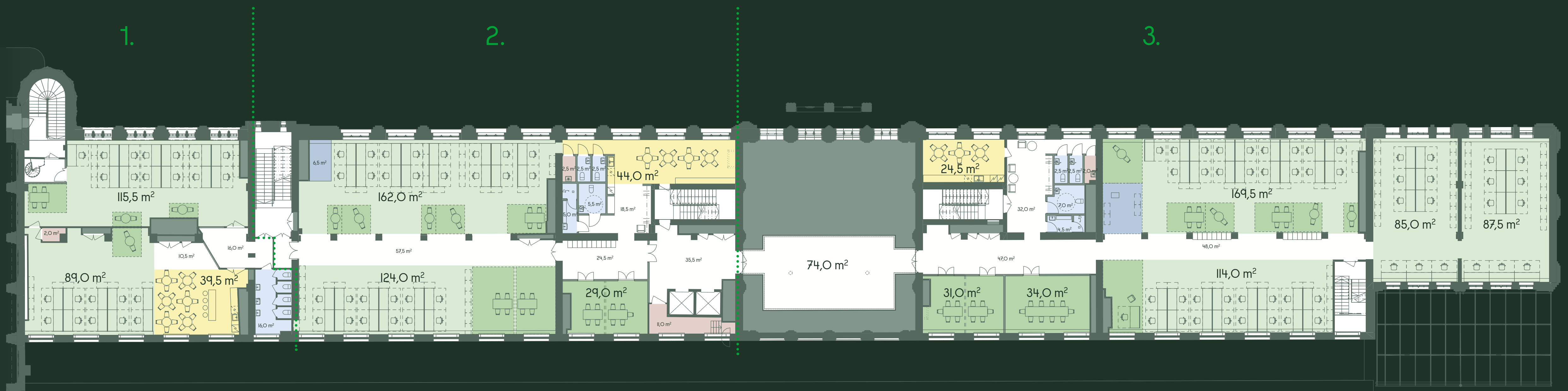
Room Number	Room Name	Square meters	Room Number	Room Name	Square meters	Room Number	Room Name	Square meters	Room Number	Room Name	Square meters	Room Number	Room Name	Square meters
2500	Office	89,0	2507	Office	124,0	2520B	Toilet	2,5	2525	Aisle	32,0	2530	Office	114,0
2500A	NegSpace	39,5	2508	Office	162,0	2520C	Toilet	2,5	2525A	Toilet	2,5	2531B	Office	169,5
2500B	Aisle	10,5	2516	Elevator lobby	35,0	2520D	Toilet	5,5	2525B	Toilet	2,5	2532	Office	85,0
2502	Office	115,5	2516a-b	NegSpace	29,0	2520E	Shower	5,0	2525C	Siivousk.	2,0	2533	Office	87,5
2502A	Storage	2,0	2517	Aisle	24,0	2522	Bridge	74,0	2525D	Toilet	7,0	2537	Storage	11,0
2504	Aisle	16,0	2518	Vestibule	18,0	2523a-b	NegSpace	31,0	2526	Shower	4,5			
2505B	Toilet	16,0	2520	NegSpace	44,0	2523c	NegSpace	34,0	2527	Aisle	47,0			
2506	Aisle	57,0	2520A	Siivousk.	2,5	2524	NegSpace	24	2528	Aisle	48,0			
														<b>1575</b>



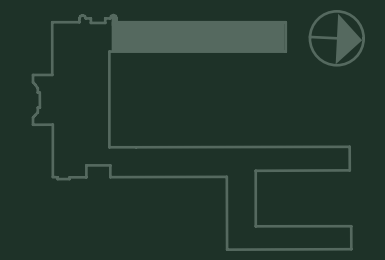


2<sup>nd</sup> floor / example 2 / open office

Area of the whole farm: **1575 m<sup>2</sup>**. It is possible to share the space with three different operators.



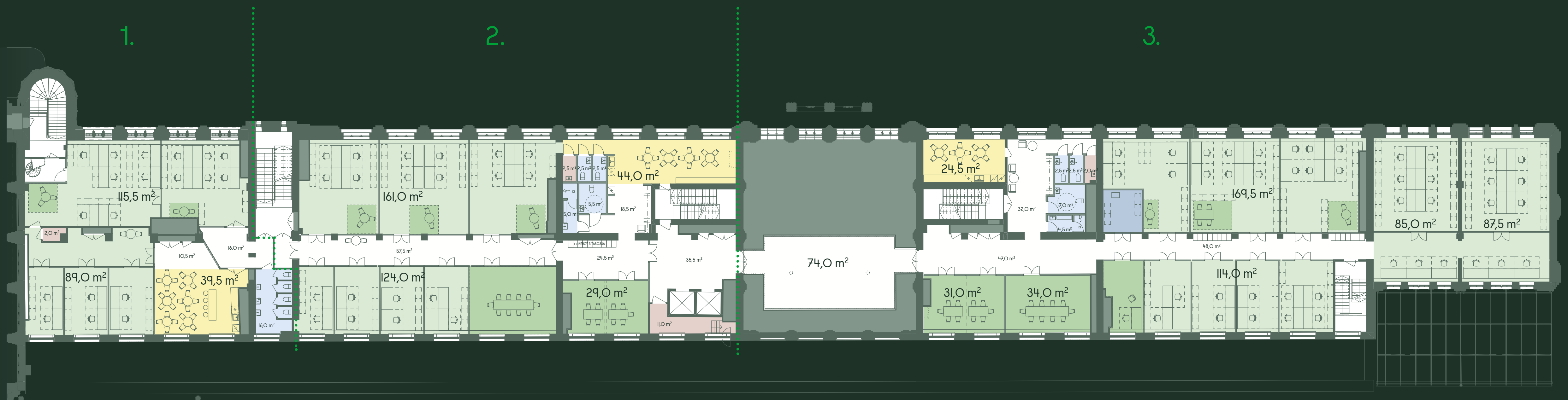
- Office
- Negotiation space
- Break area
- Copy room
- Bathroom, staff facilities
- Aisle
- Storage
- Technical space



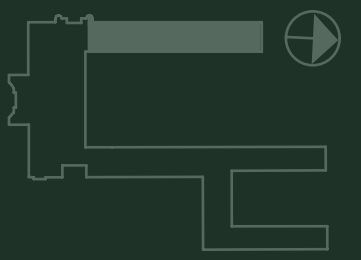


2<sup>nd</sup> floor / example 3 / office rooms

Area of the whole farm: **1575 m<sup>2</sup>**. It is possible to share the space with three different operators.



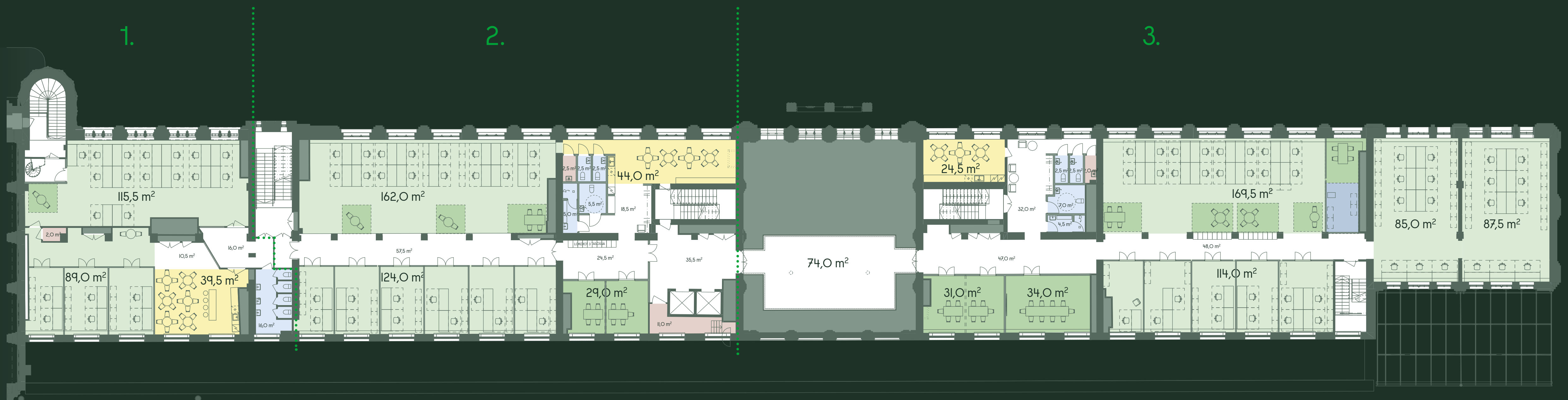
- Office
- Negotiation space
- Break area
- Copy room
- Bathroom, staff facilities
- Aisle
- Storage
- Technical space



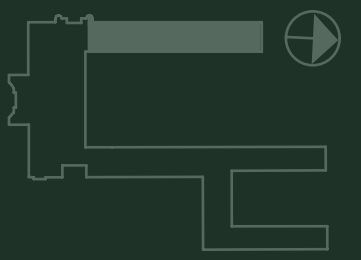


2<sup>nd</sup> floor / example 4 / combination: open & office rooms

Area of the whole farm: **1575 m<sup>2</sup>**. It is possible to share the space with three different operators.



- Office
- Negotiation space
- Break area
- Copy room
- Bathroom, staff facilities
- Aisle
- Storage
- Technical space





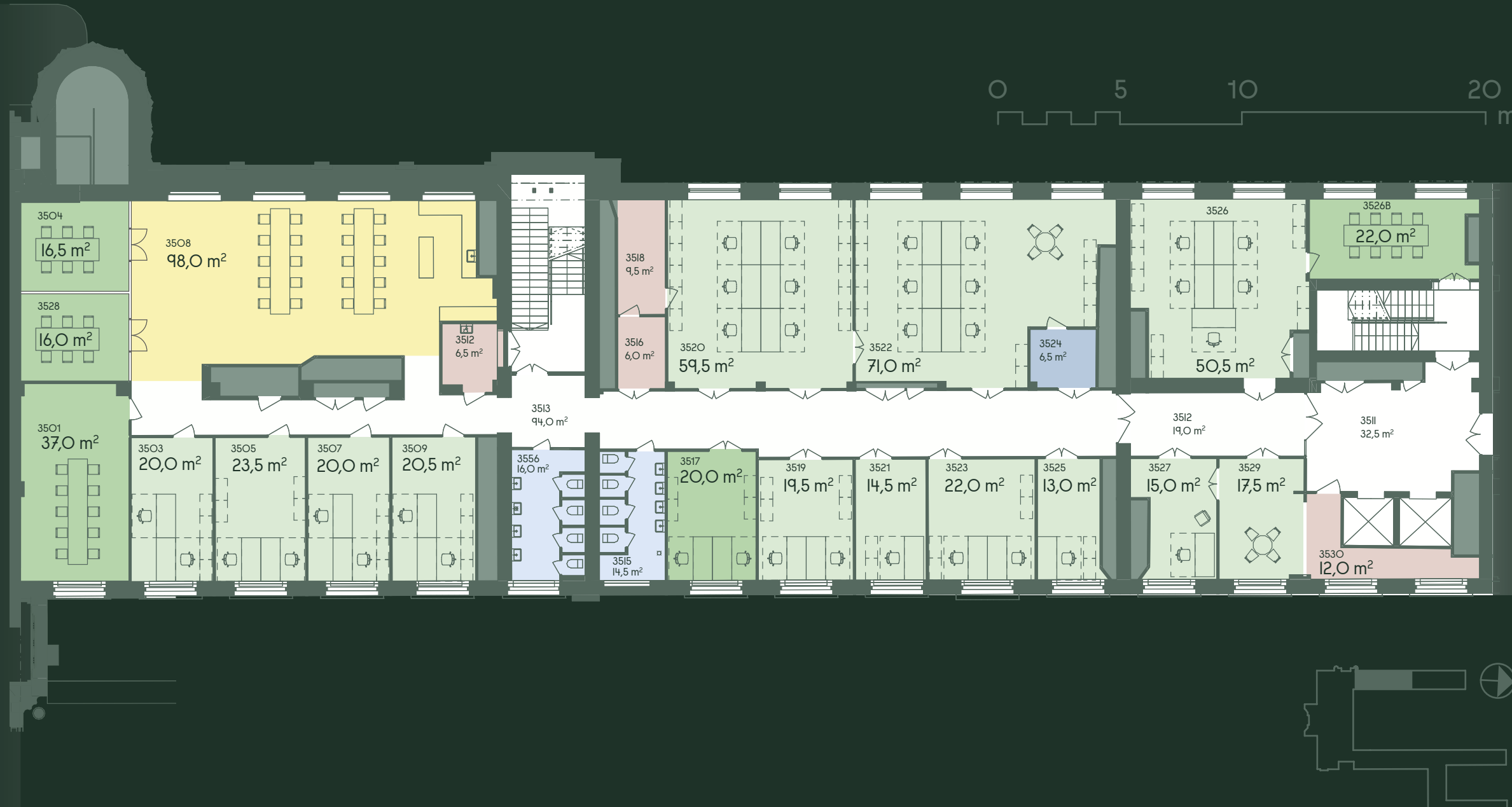
### 3<sup>rd</sup> floor / example / office rooms

Area of the whole farm **760 m<sup>2</sup>**

300 m<sup>2</sup>

300 m<sup>2</sup>

160 m<sup>2</sup>



- Office
- Negotiation space
- Break area
- Copy room
- Bathroom, staff facilities
- Aisle
- Storage
- Technical space

Room Number	Room Name	Square meters	Room Number	Room Name	Square meters	Room Number	Room Name	Square meters
3501	Office	37,0	3515	Toilet	14,5	3525	Office	13,0
3503	Office	20,0	3516	Storage	6,0	3526	Office	50,5
3504	NegSpace	16,5	3517	Office	20,0	3526B	Office	22,0
3505	Office	23,5	3518	Storage	9,5	3527	Office	15,0
3507	Office	20,0	3519	Office	19,5	3528	NegSpace	16,0
3508	Break Room	98,0	3520	Office	59,5	3529	Office	17,5
3509	Office	20,5	3521	Office	14,5	3530	Storage	12,0
3512	Aisle	19,0	3522	Office	71,0	3556	Toilet	16,0
3512	Siivousk.	6,5	3523	Office	22,0			
3513	Aisle	94,0	3524	Tulostus	6,5			
								<b>760,0</b>

The total area of the 2<sup>nd</sup> and 3<sup>rd</sup> floors is **2335 m<sup>2</sup>**





LET'S TALK MORE





PÄÄ  
RAUTATIE-  
ASEMA

/LÄNSISIIPPI

---

Michael Lindgren

VR Group Property Unit, Rentals

+358 40 862 5571

michael.lindgren@vr.fi

---

Jani Jääskeläinen

Program Manager

+358 40 862 1788

jani.jaaskelainen@vr.fi